



R·R·R·A·S·O·C

2020 Annual Report

Member Communities

**Farmington
Farmington Hills
Milford
Milford Township
Novi
South Lyon
Southfield
Walled Lake
Wixom**

Board of Directors

Chairman

Fred Zorn, City Administrator, Southfield

Vice Chairman

vacant

Treasurer

Chelsea Pesta, Assistant City Manager, Walled Lake

Secretary

Gary Mekjian, Assistant City Manager, Farmington Hills

David Murphy, City Manager, Farmington

Christian Wuerth, Village Manager, Milford

Don Green, Township Supervisor, Milford Township

Pete Auger, City Manager, Novi

Paul Zelenak, City Manager, South Lyon

L. Dennis Whitt, City Manager, Walled Lake

Steve Brown, City Manager, Wixom

Designated Board Alternates

Chuck Eudy, Director, Farmington Department of Public Services

Karen Mondora, Director, Farmington Hills Department of Public Services

Mike Karll, Director, Milford Department of Public Services

Victor Cardenas, Assistant City Manager, Novi

John Michrina, Deputy City Administrator, Southfield

Tim Sikma, Director, Wixom Department of Public Works

RRRASOC Staff

Michael Csapo, General Manager

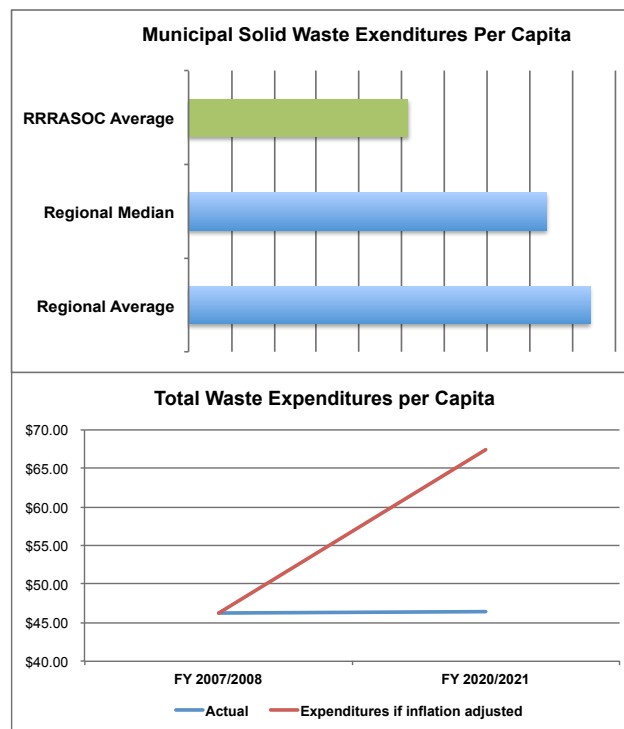
Laura Shaw, Administrative Secretary

Sandra Porter, Recycling Coordinator

The events of 2020 demonstrated the institutional resiliency of RRRASOC, its Member Communities, and the contractors that provide services to the residents of our communities. Deemed part of the country’s critical infrastructure and essential services, most solid waste and recycling services continued largely unabated.

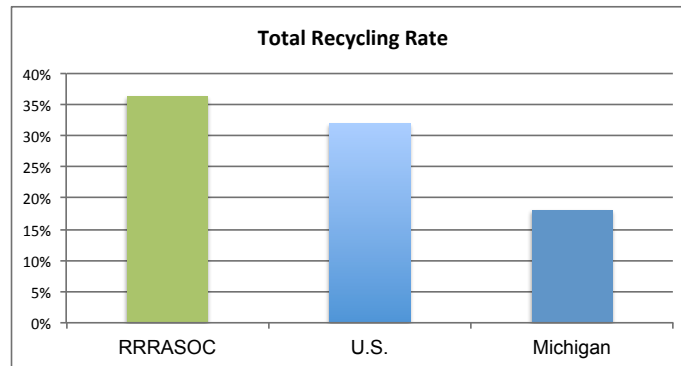
Notable activities in 2020 included:

- Along with its MRF operating partner, Republic Services, RRRASOC navigated the challenges posed by the COVID 19 pandemic, as well as the difficult commodity and labor markets, with the RRRASOC MRF remaining the highest volume processing facility in Michigan;
- RRRASOC began working with IRIS Waste Diversion Specialists and The Recycling Partnership to improve material quality and processing safety by reducing recycling contamination, using a \$150,000 Recycling Quality Improvement grant from the Michigan Department of Environment, Great Lakes, and Energy (EGLE);
- A Recycling Infrastructure grant of nearly \$24,000 was awarded by EGLE, funding security cameras for the Novi Drop Off Center to address illicit dumping and material contamination;
- The Michigan Department of Agriculture awarded a \$20,000 Clean Sweep grant to RRRASOC to facilitate the collection of pesticides within our communities;
- The annual audit by Plante & Moran of the *RRRASOC Financial Report for FY 2019 – 2020* showed that RRRASOC conducted its financial affairs in accordance with generally accepted accounting principles and that the Authority improved its financial position;
- The completion of the *FY 2020 – 2021 Solid Waste Expenditure Benchmark Study* demonstrated the continued cost effectiveness of the programs in the RRRASOC communities.

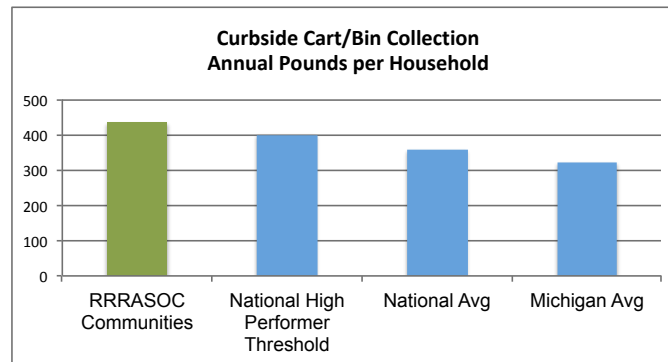


More than 38,000 tons of recyclable and reusable material, yard waste, and household hazardous waste items were collected and diverted from local landfills through the RRRASOC curbside collection, drop-off, and event-based programs.

The combined recycling rate of the RRRASOC communities was 36.25%, which is twice Michigan's recycling rate and 13% above the national average.



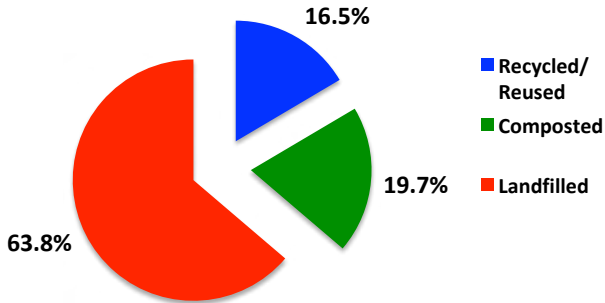
Overall, the RRRASOC communities collected more than 434 pounds per household through their curbside cart/bin collection programs, exceeding the national "High Performer" benchmark, in addition to the national and Michigan averages.



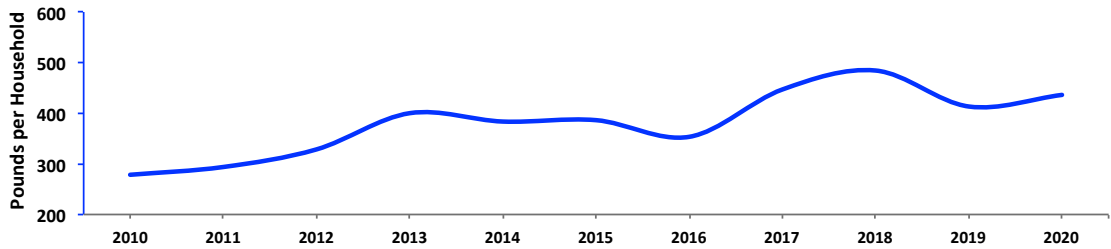
Lifecycle analysis shows that recapturing those resources for value-added economic activity also yielded significant environmental benefits, including the following:

- ♻️ Conserved nearly 172 billion Btu, the equivalent of the annual energy consumption of more than 1,700 households;
- ♻️ Preserved nearly 129,000 trees;
- ♻️ Reduced waterborne pollution emissions by 72 tons;
- ♻️ Reduced airborne pollution emissions by nearly 19,300 metric tons of carbon equivalent.

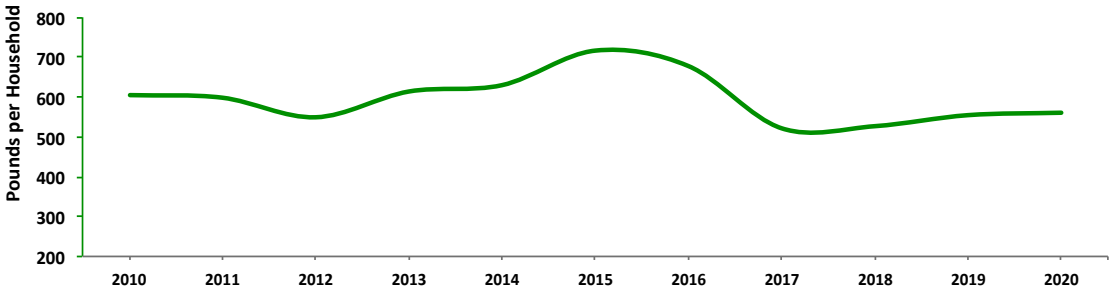
Solid Waste Disposition: 2020



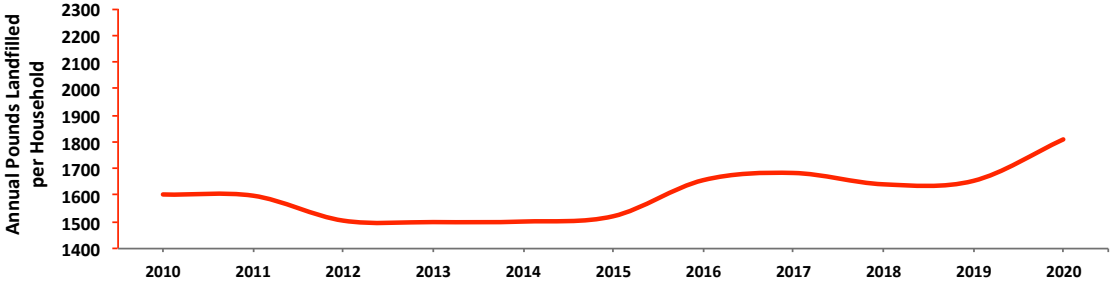
Recycling History Curbside Collection



Composting History



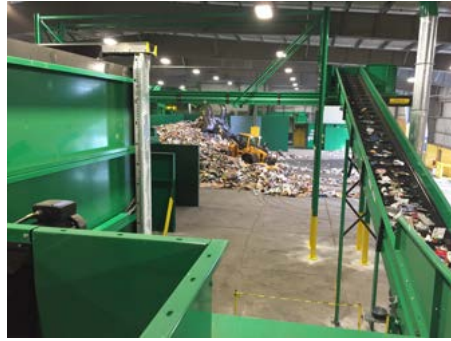
Waste Generation History



RRRASOC's MRF operating partner, Republic Services, operated the MRF at full capacity, running two production shifts per day, often six days per week, as the MRF continued to serve as the cornerstone for the recycling in the RRRASOC communities and much of southeast Michigan.

As part of the critical supply chain, Republic Services successfully navigated the health and safety issues related to COVID 19, with no lost operational time.

Overall, the facility processed nearly 74,000 tons of material during the year, which is a four percent increase from the previous year. Nearly 23% was material from the nearly 74,000 RRRASOC area homes and the RRRASOC drop-off centers. Our communities accounted for nearly 17,000 tons of paper, glass, plastic, and metal that was processed at the MRF and shipped throughout the U.S. and abroad, providing valuable feedstock for manufacturers.



Despite cancelling all four of the spring collection events due to COVID 19, RRRASOC's Household Hazardous Waste (HHW) collection program had great participation in 2020. More than 7,700 residents participated in the program to take advantage of the opportunity to recycle and properly dispose of the hazardous material found in their homes, making it the third highest year of participation in program history.

Attendance records were set at events in Wixom and Southfield and the use of the contractor's site for drop off set a new record. In addition, three extra HHW events and three extra document shredding events were held to make up for the missed opportunities in the spring.

Nearly 520,000 pounds of material were collected in 2020, which is 4% more than 2019. The material was comprised of the following:

- Used electronic equipment = 54.5%;
- Automotive fluids = 11.0%;
- Herbicides, pesticides, and other toxic products = 9.5%;
- Oil-based paint = 7.2%;
- Toxic products = 6.9%;
- Lead acid and dry cell batteries = 6.7%;
- The remaining 4.2% fell into 14 other categories of hazardous materials.

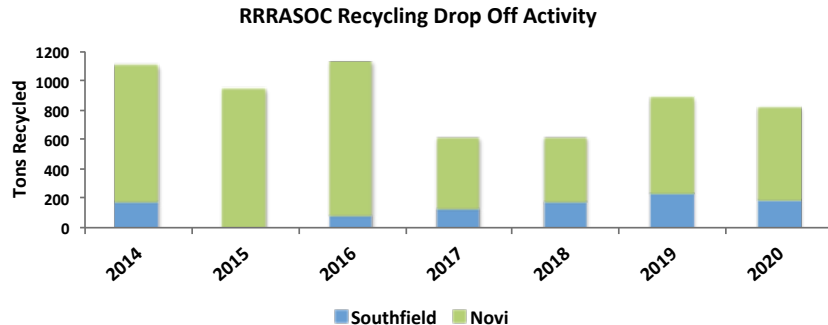
ERG Environmental Services, a local hazardous waste company, handled the material. Disposal and recycling costs through ERG continued to be among the lowest in southeast Michigan. All material was handled in accordance with state and federal laws.



RRRASOC's recycling drop-off centers continued to be a popular recycling option for many throughout the region. Last year, 822 tons were brought to the sites.

The drop-off center in Novi accounted for 628 tons of recycling, while the Southfield location contributed another 194 tons.

Using Recycling Quality Improvement grant (RQI) funds for evaluation and education, the RRRASOC team was able to reduce contamination at the Novi location by nearly 50%.



The Simple Recycling program remained robust despite the impact of COVID 19, which required the temporary suspension of the program twice during the year. Designed to complement charitable giving by our homeowners, the program offers an opportunity to ensure that household goods that might otherwise be landfilled are integrated back into the value chain. During the year, more than 215,000 pounds were collected for reuse and recycling.



RRRASOC continued to use a multi-platform approach to community outreach and homeowner education. Last year's efforts complemented the communication programs of our individual communities with the following:

- Nearly 175,000 grant-funded, direct mail educational postcards;
- Nearly 82,000 material searches using our online Recycling Directory;
- Downloads of the Recycling Directory mobile application increased by 21%;
- Subscribers to our monthly electronic newsletter increased by 29%;
- 806 new resident packets were distributed;
- The RRRASOC website was updated and redesigned.

Resource Recovery and Recycling Authority of Southwest Oakland County 2020 Annual Report



MRF Receives Distinguished Infrastructure Award from the National Council for Public-Private Partnerships
November 2012

South Lyon and Livonia Begin Curbside Collecting Collection
February 2014

Walled Lake Begins Curbside Collecting Collection
August 2014

Processing System Installation Begins
November 2015

Village of Milford and Milford Township Added as Member Communities
December 2015

Farmington and Milford Begin Curbside Collecting Collection
March 2016

Milford Township Begins Curbside Collecting Collection
April 2016

Curbside Recycling Cart Collection Begins in Novi and Southfield
July 2016

Farmington Hills Begins Curbside Collecting Collection
August 2016

Curbside Recycling Cart Collection begins in Milford and Milford Township
September 2016

Southfield Begins Curbside Collecting Collection
February 2017

Novi Begins Curbside Collecting Collection
July 2018

Curbside Recycling Cart Collection Begins in South Lyon and Walled Lake
July 2018

MRF Receives Best Paper Recycling Award from the American Forestry & Paper Association
October 2008

RRRASC Receives Outstanding Project Award from the National Council for Public-Private Partnerships
September 2010

RRRASC Receives Regional HWI Program Award
September 2009

RRRASC Receives Best Paper Recycling Award from the American Forestry & Paper Association
October 2008

RRRASC Receives Outstanding Project Award from the National Council for Public-Private Partnerships
September 2010

RRRASC Receives Regional HWI Program Award
September 2009

RRRASC Receives Best Paper Recycling Award from the American Forestry & Paper Association
October 2008

RRRASC Receives Outstanding Project Award from the National Council for Public-Private Partnerships
September 2010

RRRASC Receives Regional HWI Program Award
September 2009

RRRASC Receives Best Paper Recycling Award from the American Forestry & Paper Association
October 2008

RRRASC Receives Outstanding Project Award from the National Council for Public-Private Partnerships
September 2010

RRRASC Receives Regional HWI Program Award
September 2009

RRRASC Receives Best Paper Recycling Award from the American Forestry & Paper Association
October 2008

RRRASC Receives Outstanding Project Award from the National Council for Public-Private Partnerships
September 2010

RRRASC Receives Regional HWI Program Award
September 2009

RRRASC Receives Best Paper Recycling Award from the American Forestry & Paper Association
October 2008

RRRASC Receives Outstanding Project Award from the National Council for Public-Private Partnerships
September 2010

RRRASC Receives Regional HWI Program Award
September 2009

RRRASC Receives Best Paper Recycling Award from the American Forestry & Paper Association
October 2008

RRRASC Receives Outstanding Project Award from the National Council for Public-Private Partnerships
September 2010

RRRASC Receives Regional HWI Program Award
September 2009

RRRASC Receives Best Paper Recycling Award from the American Forestry & Paper Association
October 2008

RRRASC Receives Outstanding Project Award from the National Council for Public-Private Partnerships
September 2010

RRRASC Receives Regional HWI Program Award
September 2009

RRRASC Receives Best Paper Recycling Award from the American Forestry & Paper Association
October 2008

RRRASC Receives Outstanding Project Award from the National Council for Public-Private Partnerships
September 2010

RRRASC Receives Regional HWI Program Award
September 2009

RRRASC Receives Best Paper Recycling Award from the American Forestry & Paper Association
October 2008



R·R·R·A·S·O·C

20000 W. 8 Mile Road
Southfield, MI 48075
248.208.2270
248.208.2273 fax
www.RRRASOC.org

**Resource Recovery and Recycling Authority of Southwest Oakland County
2020 Annual Report**