



Recycling Authority February 2021

20000 West Eight Mile Road | Southfield
248-208-2270 | www.rrrasoc.org



Household Hazardous Waste 2021 Event Dates

Many products used to paint, clean, and maintain our homes, gardens and yards contain chemicals that may be toxic to human health and the environment when disposed of improperly.

These products, known as Household Hazardous Waste (HHW) require special handling and disposal through licensed hazardous waste companies which is why RRRASOC and our member communities sponsor several drop-off events and other disposal opportunities throughout the year.

We encourage all residents to responsibly dispose of their HHW at one of the drop-off events, utilizing the free drop off appointments at ERG Environmental Services in Livonia, or by scheduling pickup service from your home for a fee.

April 10th - Wixom

9 am - 2 pm
Wixom DPW
2041 Charms Road

April 17th - Southfield

9 am - 2 pm
RRRASOC MRF - Truck Entrance
20875 Mapleridge Avenue

May 1st - Farmington Hills

9 am - 2 pm
Oakland Community College - Orchard
Ridge Campus Lot 8
27055 Orchard Lake Road

May 22nd - Milford

9 am - 2 pm
Milford Civic Center - Enter from west off of
Mont Eagle Street
1100 Atlantic Street

Household Hazardous Waste (HHW)

How to identify and properly dispose of HHW

Many products used to paint, clean, and maintain our homes, gardens and yards contain chemicals that may be toxic to human health and the environment when disposed of improperly.



What is Household Hazardous Waste?

Household Hazardous Waste (HHW) is products used in and around your home that have one or more of the following characteristics: **Corrosivity; Toxicity; Flammability; Reactivity.** Read the label to determine which products require special handling. Warnings such as "poisonous or toxic", "flammable or ignitable", or "corrosive" are indicators that the items should be disposed of as HHW. Cleaners that contain strong acids, bleach or ammonia are also hazardous.

Paint and paint products that are oil-based and require the use of paint thinner or mineral spirits are hazardous. Water-based paints are not hazardous and can be prepared for safe disposal with household trash. To prepare latex paint for curbside pickup, mix paint with an absorbent such as cat litter, sawdust, or commercial paint hardener. Once the paint is solidified, place it in a trash bag and set it out on regular collection day. Learn how to reduce and reuse leftover paint on the RRRASOC website.

What to Do With Unwanted HHW

HHW requires special handling and disposal through licensed hazardous waste companies. Residents are encouraged to bring HHW to a special drop-off event, sponsored by RRRASOC and its member communities. The reverse side of this flyer lists the dates and locations of HHW collection events.

RRRASOC residents can drop off HHW at ERG Environmental Services in Livonia on non-event days without a fee. HHW pickup from your home is also available for a fee. For more information on drop-off or pickup services visit the RRRASOC website at rrrasoc.org

Tips for Transporting Household Hazardous Waste

- Keep items in their original and labeled containers.
- Do not mix the contents of unknown or unlabeled containers.
- Make sure that the containers are not leaking prior to bringing them to a collection event.
- Do not transport containers with open lids.
- Place chemicals away from passengers.
- Secure all containers so they cannot slide, tip or spill contents.



Resource Recovery and Recycling Authority of Southwest Oakland County
contact us at 20000 W. Eight Mile Rd., Southfield, MI 48075 online at www.rrrasoc.org or call 248.208.2270

Click the image above to download and print your own copy of the 2021 HHW Flyer.

July 17th - Wixom

9 am - 2 pm
Wixom DPW
2041 Charms Road

October 2nd - Novi

9 am - 2 pm
Novi DPW
26300 Lee BeGole Drive

October 30th - Southfield

9 am - 2 pm
RRRASOC MRF - Truck Entrance
20875 Mapleridge Avenue

Benefits of Proper HHW Management

Disposing of your HHW at special collection events or HHW facility benefits you, the community and the environment by:

- Keeping toxic chemical out of landfills
- Reducing the potential for groundwater contamination
- Preventing pollution on our streets from garbage trucks
- Eliminating exposure to toxins for sanitation workers
- Protecting local bodies of water from contamination
- Reducing the incidence of household chemical poisoning of children and pets



We Have Some Questions For You

Do you visit RRRASOC.org to find answers to you questions?

Yes

Select

No

Select

Do you use the Recycling Directory/Mobile App?

Yes

Select

No

Select

Do you follow us on Facebook?

Yes

Select

No

Select



RRRASOC | THE RECYCLING AUTHORITY

FINANCED IN PART BY

EGLE

THE RECYCLING PARTNERSHIP

RRRASOC Recycling Directory

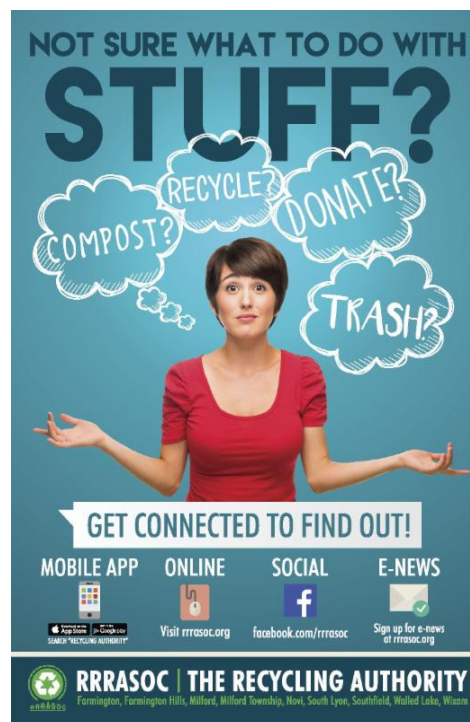
Not sure what to do with stuff?

Visit rrrasoc.org and use the Recycling Directory search bar to type in keywords and get recycling, composting, reuse or disposal instructions.

The searchable, intuitive format of the Recycling Directory provides RRRASOC specific information.

Also Available:

- Mobile App
 - From your App Store or Google Play, search for "Recycling Authority"
- Alexa Enabled Device
 - Simply say, "Alexa, enable Recycling Directory."



RRRASOC - Recycling Authority | 248-208-2270 | rrrasoc.org