



## Recycling Authority February 2023

20000 West Eight Mile Road | Southfield  
248-208-2270 | [www.rrrasoc.org](http://www.rrrasoc.org)



### Fall in Love with Recycling



With Valentine's Day right around the corner, there will be an abundance of cards, gift wrap, and other materials entering the waste stream. That means knowing what can be recycled in your area becomes even more essential (it never stops being essential!).

We know what you may be thinking: ***"This is like the holidays all over again!"*** Not to worry - that's why we're here! We'll be showing you what items are accepted in our recycling program, as well as some tips and examples to help you get through Valentine's Day sustainably.

#### Recyclable Items

- **Greeting Cards & Envelopes:** These are good to recycle! Just avoid cards with excess glitter, foil, or plastic add-ons. Photo paper is also non-recyclable. You can leave the stamp on the envelope when recycling it.
- **Gift Packaging:** It depends. Cardboard boxes and paper gift bags are recyclable, but be sure to remove any rope handles, beads, or any other non-paper additives before recycling them. Better yet, save them to reuse next year!
- **Chocolate Boxes:** These can be recycled as long as they do not contain foil, glitter, fabric, bows, or ribbons. Don't forget to remove any plastic inserts, windows, and wrappers (place them in the garbage) before recycling. Metal tins can be recycled as well!



#### How to Avoid Creating Waste

- Gift your valentine some homemade baked goods or buy them a houseplant instead of throw-away gifts. This is a great way to show your lasting love!

- If you already have a gift picked out, ditch the wrapping paper and use recyclable brown paper, newspaper, or reusable gift bags instead.
- Cut down on the cards by simply telling your valentine directly how much you appreciate them (or send an e-card!).
- Instead of gift-giving, fill the day with bonding activities such as taking a class together, going out for a meal, going to the spa, or even trying karaoke!



## Try the Waste Sorting Game!

Combating wishcycling, stopping the spread of misinformation, or trying to be the best recycler you know... There are lots of reasons to try our interactive waste sorting game on the Recycling Directory at [rrrasoc.org](http://rrrasoc.org)! **Ready, Set, Sort** tests your knowledge and is specific to RRRASOC communities to give you the most accurate recycling instructions for where you live.

## Play our Waste Sorting Game!



**Teachers and parents:** Give **Ready, Set, Sort** a try to have your kids build their own digital park and print out a certificate of completion!

## Every Straw Matters

### February 24th is Skip the Straw Day!

With the rise of plastic goods in the 1960s, straws graduated from paper to its less-sustainable cousin, plastic. Since then, nearly every plastic straw that has been created is still somewhere on this planet due to it taking about 200 years to decompose.

Instead of adding to the earth's growing straw collection in our oceans and landfills, opt for a metal, silicone, or glass straw that can be used over and over again without degrading. Or just ditch using straws completely! Not only are you fighting plastic pollution by doing so, but you're also setting a good example for those



around you.

**Please note:** Plastic straws are **not** accepted in your recycling stream due to their size - they are simply too small to make it through the sorting process! To avoid this issue, always opt to reduce the amount disposable of straws you use.

---

## What Isn't HHW?

By now, many of you are well-versed in what types of items can be considered Household Hazardous Waste (HHW). However, there are often some grey areas that can be confusing - such as certain types of paints, sharps, and more. With this year's first HHW Collection Event coming up in April, check below to learn more about what *isn't* considered HHW, as well as what's *not* accepted at a RRRASOC collection event.



**Latex Paint**

Latex paint is water-based. To learn how you can properly dispose of latex paint, click [here](#).



**Sharps**

Sharps can consist of needles, syringes, scissors, or any device with sharp points that can puncture skin.



**Unknowns (5+ Gal.)**

For safety concerns, unknowns over 5 gallons are not accepted at HHW Collection Events.



**Smoke Detectors**

These can be reused if possible or placed in your regular household garbage.



**Explosives**

To reduce the risk of fire or danger to staff, fireworks or any kinds of explosives are not accepted.



**Recyclables**

Place these in your curbside recycling cart or take them to the nearest recycling drop-off site!

Commercial, business, and radioactive waste is not accepted at HHW Collection Events. Visit our [Acceptable Materials](#) page for more information!

---

## 2023 HHW Collection Event Dates

During the following HHW Collection Events, all residents of RRRASOC member communities are welcome to bring household hazardous waste for an opportunity to safely discard their hazardous items and e-waste. *Simple Recycling* and paper shredding services will also be available.

**April 15th, 2023** ☐

Wixom Dept. of Public Works  
2041 Charms Rd., Wixom

**April 22nd, 2023** ☐

RRRASOC MRF - Truck Entrance  
20875 Mapleridge Ave., Southfield

9:00am - 2:00pm

9:00am - 2:00pm

### May 6th, 2023

Oakland Community College  
Orchard Ridge Campus Lot 8  
27055 Orchard Lake Rd., Farmington Hills

### May 20th, 2023 ☐

Milford Civic Center  
1100 Atlantic St., Milford  
Enter from West, off Mont Eagle St.

### July 15th, 2023 ☐

Wixom Dept. of Public Works  
2041 Charms Rd., Wixom  
9:00am - 2:00pm

### October 7th, 2023

Novi Dept. of Public Works  
26300 Lee BeGole Dr., Novi  
9:00am - 2:00pm

### October 28th, 2023 ☐

RRRASOC MRF - Truck Entrance  
20875 Mapleridge Ave., Southfield  
9:00am - 2:00pm

**\*The T-shirt icon indicates an HHW Collection Event during which clothing, shoes, accessories, and small household items will be accepted by Simple Recycling.**

For more information about HHW events and how to prepare your items, please visit our [HHW page](#).

## HHW Drop-Off at ERG Environmental Services

If you have HHW that you'd like to properly dispose of between collection events, you're in luck! Drop off your HHW without a fee at ERG Environmental Services during the following hours:

### Winter Hours:

**Monday - Friday:**  
9:00 AM - 5:00 PM

HHW pickup from your home is also available for a fee of \$135 per stop plus \$0.75 per pound of material collected. This fee is paid directly by the resident to ERG Environmental Services.

*To confirm drop-off times and/or to schedule a pickup, please contact:*

ERG Environmental Services  
13040 Merriman Road, Livonia  
(734) 437-9650

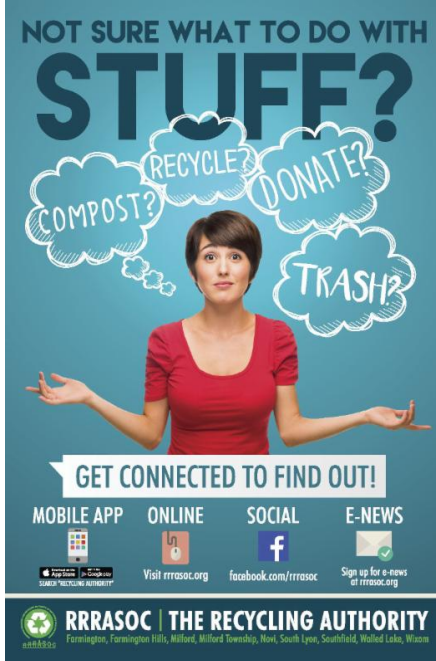


For more info, visit the [ERG HHW Drop-Off page](#) or our [HHW page](#).

## RRRASOC Recycling Directory

Not sure what to do with stuff?

Visit [rrrasoc.org](http://rrrasoc.org) and use the Recycling Directory search bar to type in keywords and get recycling, composting, reuse or



disposal instructions.

The searchable, intuitive format of the Recycling Directory provides RRRASOC specific information.

Also Available:

- Mobile App
  - From your App Store or Google Play, search for "Recycling Authority"
- Alexa Enabled Device
  - Simply say, "Alexa, enable Recycling Directory"

Want more tips, tricks, and updates about recycling? We have a Facebook page where we can reach each other to make recycling easier. You can also reach us via [RRRASOC.org](http://RRRASOC.org) and email at [education@rrrasoc.org](mailto:education@rrrasoc.org)!



**RRRASOC - Recycling Authority | 248-208-2270 | [rrrasoc.org](http://rrrasoc.org)**

RRRASOC - Recycling Authority | 20000 West Eight Mile Rd, Southfield, MI 48075

[Unsubscribe mcsapo@rrrasoc.org](mailto:mcsapo@rrrasoc.org)

[Update Profile](#) | [Constant Contact Data Notice](#)

Sent by [mcsapo@rrrasoc.org](mailto:mcsapo@rrrasoc.org) powered by



Try email marketing for free today!