



Recycling Authority March 2023

20000 West Eight Mile Road | Southfield
248-208-2270 | www.rrrasoc.org



HHW Collection Starts Next Month!

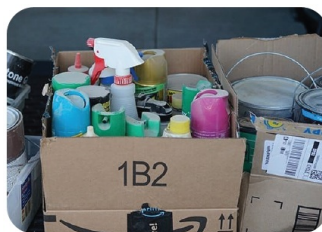


While it may not feel like it yet, spring is right around the corner! That also means the first HHW (*Household Hazardous Waste*) Collection Event of 2023 is just **one month away**. At these special events, residents of Farmington, Farmington Hills, Village of Milford, Milford Township, Novi, Southfield, South Lyon, Walled Lake, and Wixom have an opportunity to safely discard their hazardous items, e-waste, sensitive documents for shredding, batteries, and even clothing for donation.

To keep April's HHW Collection Events running smoothly, we ask that you familiarize yourself with some rules and tips before attending:



Stay inside your vehicle while at the event. Workers are there to unload the HHW from your vehicle, and any additional foot traffic could slow down the process.



Place your HHW in boxes that you do not want back. If workers have to return the bin or tub to you, this will take additional time and may cause delays.



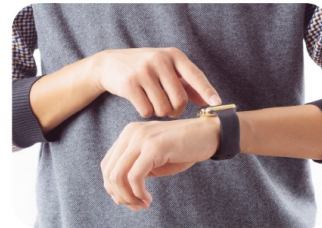
Please keep lightbulbs separate from any batteries, as the batteries tend to shatter the lightbulbs. The resulting shattered glass can be hazardous for workers.



If possible, please tape the end terminals of your batteries so that they do not touch one another. The improper disposal of batteries could cause fires.



Please be patient! Everyone at the event is working hard to keep things running smoothly, but hiccups do happen on occasion.



The event start time is 9am. Early birds are welcome to wait in line in their car, but HHW will not be collected until the event starts.

For more instructions, rules, and safety tips, view our [HHW Flyer and Event Schedule](#). Feel free to download and print for your own reference!

Keeping it Green (Not Just for St. Patrick's Day!)

Want to avoid getting pinched this St. Patrick's Day, but don't own any green clothing? No worries! Let people know you're keeping it green by practicing good recycling habits. On St. Patrick's Day (and every day), keep the following in mind and good luck is sure to come your way:



Balloons, beaded necklaces, plastic and glitter decorations, and costumes are not recyclable curbside or at the drop-off sites. Consider donating unwanted, usable items to a local secondhand store or keep them for next year.

If you're celebrating with drinks, remember that **aluminum cans, glass bottles, and plastic drinking cups (such as Solo cups)** are recyclable. Bottles and cans are often returnable at your local grocery store. *It's never a bad time to set a good example for your peers!*

Attending a St. Patty's Day parade? Recycling bins may not be as readily available when out in public, yet it's best to wait until you're near one before deciding to toss an item. Consider the **flyers, pamphlets and business cards** handed out at parades and their recyclability.

If you have questions about the recyclability of an item not listed here, be sure to check out the [Recycling Directory at RRRASOC.org!](#)



Disposing of Household Paints

Latex Paint

Also known as water-based, acrylic, or emulsion paint, **latex paint** contains mostly water and is therefore not considered HHW. With that in mind,



it is not accepted at HHW Collection Events and can be safely disposed of with your household trash. However, latex paint **must be solidified** before it is disposed of. *See below for options.*

Oil-Based Paints

As you may know, **oil-based paints** are accepted at our HHW Collection Events. When preparing for the event, always follow label directions when handling them. Oil-based paints can be solidified by allowing their volatile contents to evaporate in a well-ventilated area; mix the remaining liquids with absorbents and allow it to harden. Alternatively, you can apply leftover paint to scrap lumber or cardboard, then place it with your regular trash.

Option 1: Air dry by removing the lid and allowing the liquid to evaporate. This may take several days, therefore it's optimal for small quantities of paint.

Option 2: Use cat litter, sawdust, or another drying agent (found at home improvement centers) as an absorbent material in the can. How fast the paint dries depends on how much drying agent you include in the can.

Option 3: Pour thin layers into a cardboard box lined with plastic. Once a layer hardens, apply another thin layer until the entire can is emptied. When the paint is thoroughly dry, place it in a regular trash bag for disposal.



Reduce & Reuse Before You Need to Recycle!

To avoid needing to dispose of leftover paint, **reduce** your amount by measuring the space and asking your paint dealer to help you determine the correct amount for a project. If some paint remains, apply additional coats to use it completely. Use paint swatches or purchase a sample color before buying a full-size can so that you can determine if that is the color you want.



If you end up with extra paint, you can **reuse** it! Leftover paint has a shelf life of 10-15 years when stored properly. Always remember to seal the can by removing paint from the grooves of the lid and using a rubber mallet to tap the lid down securely. Storing the can in a cool, dark location such as your basement or in a cabinet or closet will keep your paint usable for a long period of time.

View our [Household Paint Disposal Guide](#) for more information regarding reducing, reusing, and recycling paint, as well as the *Do's* and *Don'ts* of paint disposal.

2023 HHW Collection Event Dates

During the following HHW Collection Events, all residents of RRRASOC member

communities are welcome to bring household hazardous waste for an opportunity to safely discard their hazardous items and e-waste. *Simple Recycling* and paper shredding services will also be available.

April 15th, 2023 □

Wixom Dept. of Public Works
2041 Charms Rd., Wixom
9:00am - 2:00pm

April 22nd, 2023 □

RRRASOC MRF - Truck Entrance
20875 Mapleridge Ave., Southfield
9:00am - 2:00pm

May 6th, 2023

Oakland Community College
Orchard Ridge Campus Lot 8
27055 Orchard Lake Rd., Farmington Hills

May 20th, 2023 □

Milford Civic Center
1100 Atlantic St., Milford
Enter from West, off Mont Eagle St.

July 15th, 2023 □

Wixom Dept. of Public Works
2041 Charms Rd., Wixom
9:00am - 2:00pm

October 7th, 2023

Novi Dept. of Public Works
26300 Lee BeGole Dr., Novi
9:00am - 2:00pm

October 28th, 2023 □

RRRASOC MRF - Truck Entrance
20875 Mapleridge Ave., Southfield
9:00am - 2:00pm

***The T-shirt icon indicates an HHW Collection Event during which clothing, shoes, accessories, and small household items will be accepted by *Simple Recycling*.**

For more information about HHW events and how to prepare your items, please visit our [HHW page](#).

HHW Drop-Off at ERG Environmental Services

If you have HHW that you'd like to properly dispose of between collection events, you're in luck! Drop off your HHW without a fee at ERG Environmental Services during the following hours:

Winter Hours:

Monday - Friday:
9:00 AM - 5:00 PM

HHW pickup from your home is also available for a fee of \$135 per stop plus \$0.75 per pound of material collected. This fee is paid directly by the resident to ERG Environmental Services.

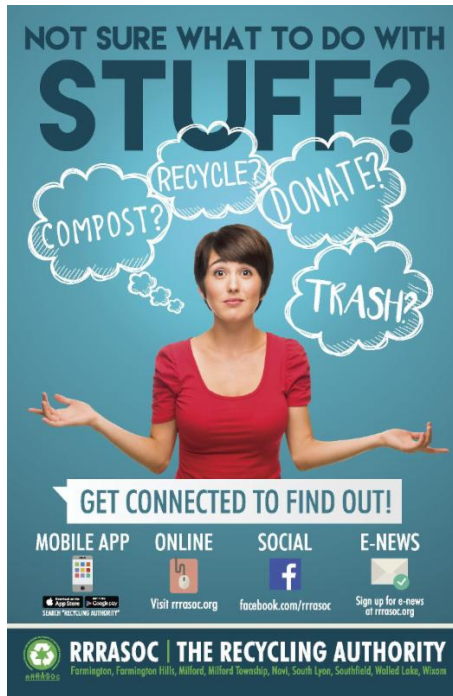
To confirm drop-off times and/or to schedule a pickup, please contact:

ERG Environmental Services
13040 Merriman Road, Livonia
(734) 437-9650



For more info, visit the [ERG HHW Drop-Off page](#) or our [HHW page](#).

RRRASOC Recycling Directory



Not sure what to do with stuff?

Visit rrrasoc.org and use the Recycling Directory search bar to type in keywords and get recycling, composting, reuse or disposal instructions.

The searchable, intuitive format of the Recycling Directory provides RRRASOC specific information.

Also Available:

Mobile App

- From your App Store or Google Play, search for "Recycling Authority"

Alexa Enabled Device

- Simply say, "Alexa, enable Recycling Directory"

Want more tips, tricks, and updates about recycling? We have a Facebook page where we can reach each other to make recycling easier. You can also reach us via RRRASOC.org and email at education@rrrasoc.org!



RRRASOC - Recycling Authority | 248-208-2270 | rrrasoc.org

RRRASOC - Recycling Authority | 20000 West Eight Mile Rd, Southfield, MI 48075

[Unsubscribe mcsapo@rrrasoc.org](mailto:mcsapo@rrrasoc.org)

[Update Profile](#) | [Constant Contact Data Notice](#)

Sent by mcsapo@rrrasoc.org powered by



Try email marketing for free today!