



Recycling Authority February 2024

20000 West Eight Mile Road | Southfield
248-208-2270 | www.rrrasoc.org



Clothing Recycling Made *Simple*



One month down, eleven to go! RRRASOC is dedicated to continually finding new ways for residents to divert their hard-to-recycle items from going to the landfill. This month, we want to focus on one of the many services we encourage RRRASOC community members to take advantage of: ***Simple Recycling!***

Clothing and textiles are 100% recyclable, but 85% still ends up in landfills. A lack of recycling education and a lack of convenient at-home donation options are partially to blame. However, *Simple Recycling's* residential at-home pickup service is available to RRRASOC communities at your convenience - plus, there is no charge at all! Items donated through *Simple Recycling* go to a local nonprofit organization of your choosing.

Simple Recycling accepts the following items for charitable donation:

Wearables

- Men's, Women's, and Children's Clothing
- Pajamas
- Shoes, Slippers and Boots
- Belts and Ties
- Coats and Jackets
- Bras and Socks (single or pairs)
- Dresses and Fashion Accessories
- Handbags and Purses
- Hats, Scarves, and Gloves
- Halloween Costumes

Household Items

- Bedroom Linens
- Pillows
- Books and Games
- Curtains and Drapes
- Kitchenware
- Pet Beds
- Stuffed Animals and Toys
- Tablecloths
- Tools
- Towels

Head on over to the ***Simple Recycling*** page at RRRASOC.org, visit SimpleRecycling.com, or call (866) 835-5068 to schedule your free pickup today! Residents who live in communities not serviced by *Simple Recycling* are encouraged to donate unwanted clothing to their favorite charity or thrift store. RRRASOC provides a list of local charitable organizations on our ***Reuse/Repurpose*** page, including those who offer porcheside pickup.





Schedule a pickup
online or by phone.



Place your gently
used items outside
your front door by
7:30am.



Simple Recycling
will pick them up!

***Simple Recycling* is a separate service from your curbside recycling collection service. The items listed above should be prepared for pickup as instructed by Simple Recycling and not placed in your recycling bin or cart.**



Recycling from the Heart

At RRRASOC, we **LOVE** recycling! Department stores all around have stocked up their Valentine's Day merchandise, from chocolates to greeting cards, to prepare for February 14th. During this time, knowing how to properly dispose of your leftover boxes, cards, and packaging becomes all-the-more essential!

Want to create less V-Day waste in the first place? Don't worry - we have some tips for that too!



Cards & Envelopes

These are good to recycle! Just avoid cards with excess glitter, foil, or plastic add-ons. Photo paper is also non-recyclable. You can leave the stamp on the envelope when recycling it.



Chocolate Boxes

These can be recycled as long as they do not contain foil, glitter, fabric, bows, or ribbons. Remove any plastic inserts, windows, and wrappers (place them in the garbage). Metal tins can be recycled as well!



Gift Packaging

Cardboard boxes and paper gift bags are recyclable, but be sure to remove any rope handles, beads, or any other non-paper additives before recycling them. Better yet, save them to reuse next year!



Filler Items

When putting together a Valentine's Day basket, avoid throw-away items and instead, fill it with your sweetheart's favorite treats, home-baked cookies, or a houseplant. It's a sure way to express your lasting love.



Cut Flowers

Cut flowers can be placed in your compost pile once they have reached the end of their lifespan. You could also try paper flowers for a sentimental gift that will last forever!



Wrapping Paper

Wrapping paper is recyclable (given it does not include glitter or foil), but using newspaper can save you some money while choosing a reusable gift bag reduces your waste!



Sustainability on the Go

Going out to eat at a restaurant to celebrate your love? Be sure to bring a reusable takeout container in order to avoid unnecessary plastic, paper, or polystyrene foam waste!



Activities Over Items

Instead of gift-giving, fill your day with bonding activities such as taking a class together, going out for a meal, going to the spa, or even trying karaoke! Creating memories can often be more impactful than a physical gift.

Need to know what to do with items not found in this month's newsletter? The [Recycling Directory](http://RRRASOC.org) at RRRASOC.org contains hundreds of everyday and seasonal items and their respective disposal outlets - from recycling to composting to everything in between!



February 24 - Skip the Straw Day



Did you know that Skip the Straw Day was invented by a group of young activists in Michigan in 2017? A great way to observe and spread this holiday's message is to simply ask your waiter or drive-thru attendant to keep the straw. While the task is easy, it's a great way to begin living a sustainable, waste-free lifestyle! **Remember:** if you don't need a straw to enjoy your beverage, *don't use one!*

Please note: Plastic straws are **not** accepted with your recycling due to their size - they are simply too small to make it through the sorting process!

2024 HHW Collection Event Dates

During the following HHW Collection Events, all residents of RRRASOC member communities are welcome to bring household hazardous waste for an opportunity to safely discard their hazardous items and e-waste. *Simple Recycling* and paper shredding services will also be available*.

April 13, 2024

Wixom Dept. of Public Works
2041 Charms Rd., Wixom
9:00am - 2:00pm

April 20, 2024

RRRASOC MRF - Truck Entrance
20875 Mapleridge Ave., Southfield
9:00am - 2:00pm

May 4, 2024

Oakland Community College
Orchard Ridge Campus Lot 8
27055 Orchard Lake Rd., Farmington Hills

May 18, 2024

Milford Civic Center
1100 Atlantic St., Milford
Enter from West, off Mont Eagle St.

July 13, 2024

Wixom Dept. of Public Works
2041 Charms Rd., Wixom
9:00am - 2:00pm

October 5, 2024

Novi Dept. of Public Works
26300 Lee BeGole Dr., Novi
9:00am - 2:00pm

October 26, 2024

RRRASOC MRF - Truck Entrance
20875 Mapleridge Ave., Southfield
9:00am - 2:00pm

***The T-shirt icon indicates an HHW Collection Event during which clothing, shoes, accessories, and small household items will be accepted by *Simple Recycling*.**

For more information about HHW events and how to prepare your items, please visit our [HHW page](#).

HHW Drop-Off at ERG Environmental Services

If you have HHW that you'd like to properly dispose of between collection events, you're in luck! Drop off your HHW without a fee at ERG Environmental Services during the following hours:

Monday - Friday:
9:00 AM - 4:00 PM

HHW pickup from your home is also available for a fee of \$135 per stop plus \$0.75 per pound of material collected. This fee is paid directly by the resident to ERG Environmental Services.

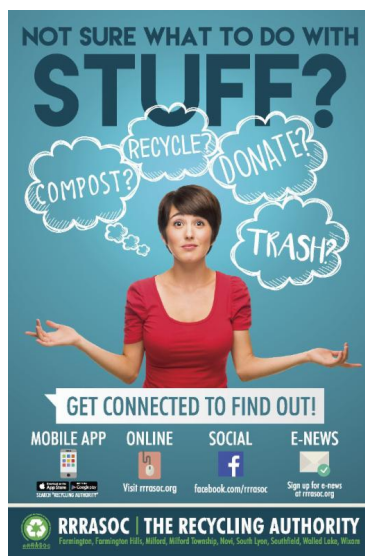
To confirm drop-off times and/or to schedule a pickup, please contact:

ERG Environmental Services
13040 Merriman Road, Livonia
(734) 437-9650



For more info, visit the [ERG HHW Drop-Off page](#) or our [HHW page](#).

RRRASOC Recycling Directory



Not sure what to do with stuff?

Visit rrrasoc.org and use the Recycling Directory search bar to type in keywords and get recycling, composting, reuse or disposal instructions.

The searchable, intuitive format of the Recycling Directory provides RRRASOC specific information.

Also Available:

Mobile App

- From your App Store or Google Play, search for "Recycling Authority"

Want more tips, tricks, and updates about recycling? We have a Facebook page where we can reach each other to make recycling easier. You can also reach us via RRRASOC.org and email at education@rrrasoc.org!



RRRASOC - Recycling Authority | 248-208-2270 | rrrasoc.org

 **RRRASOC** | THE RECYCLING AUTHORITY

[Unsubscribe mcsapo@rrrasoc.org](mailto:mcsapo@rrrasoc.org)

[Update Profile](#) | [Constant Contact Data Notice](#)

Sent by michael@rrrasoc-recyclingauthority.ccsend.com powered by



Try email marketing for free today!