



# Recycling Authority January 2024

20000 West Eight Mile Road | Southfield  
248-208-2270 | [www.rrrasoc.org](http://www.rrrasoc.org)



## New Year, New Recycling Education!

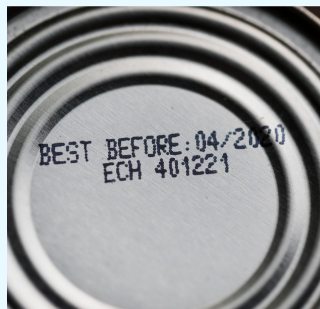
**Happy New Year!** 2023 brought RRRASOC communities more recycling education, more HHW Collection Events, and more ways to get connected! This year is no different as we continue to strive for a well-informed community, reaching multifamily residences and communities with curbside services, updated tips, and guidelines.

Looking to refresh your general recycling knowledge or want to test your friends, family, or students? Try the **Ready, Set, Sort!** interactive recycling game available on the **Recycling Directory** at [RRRASOC.org](http://RRRASOC.org). You can also view, download, or print the latest version of our **Recycling Guidelines**, set reminders for upcoming events, and search just about any item - all from our **homepage!**



## "Is This Food Expired?"

It's important to understand the different types of date labels that food companies put on their packaging, as their printed dates do not always mean the food is unsafe to eat. In fact, most foods are still tasty and nutritious for a while after the date has passed! Check below for the most common date labels found on food packaging and what they mean.



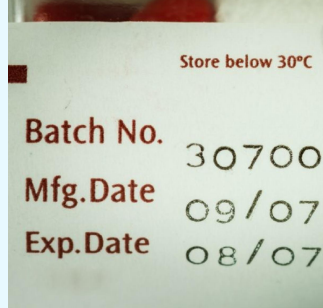
### "Best Before" Date

This date tells you how long the food will have the best flavor. It is still **safe to eat** past this date.



### "Use By" Date

Otherwise known as an *expiration date*, this is the last date that the product will be at its peak quality. It is still **safe to eat** past this date.



### "Manufacturing" Date

Manufacturers use this date solely for tracking, and it is **not an expiration date** as it is not related to the food quality or safety.



### "Sell By" Date

This date only tells the store how long to display the product for sale. It is also **not an expiration date**, thus is not related to the food quality.

Now that you know date labels are not the end-all food quality indicator, here are a couple ways to know when your food is actually spoiled:

#### Check for Strange Odor

Does it smell funky or unpleasant? Time to dispose of it!

#### Check for Off-Flavor

If it no longer tastes like it should, or has become sour or bitter, it's time to toss it!

#### Check for Weird Texture

If it's grown soggy, mushy, or some other unpleasant texture, it's probably spoiled!

## RRRASOC Education Presentations



**Did you know?** RRRASOC provides interactive recycling presentations for schools or organizations within RRRASOC communities! We visit groups ranging from scout troops, senior centers, robotics groups and various clubs. Everyone is welcome to learn about recycling and why it is important!

We also offer classroom presentations to schools for any age range. The general presentation covers the basics of recycling: what it is, why it is important and how to do it properly. However, we are happy to adjust the material depending on your group's interest/initiative or current classroom curriculum!

If you're interested in RRRASOC doing a presentation for your school or organization, you can contact us at [education@rrrasoc.org](mailto:education@rrrasoc.org). We look forward to furthering our recycling education efforts for you this year!

## 2024 HHW Collection Event Dates

During the following HHW Collection Events, all residents of RRRASOC member communities are welcome to bring household hazardous waste for an opportunity to safely discard their hazardous items and e-waste. *Simple Recycling* and paper shredding services will also be available\*.

#### April 13, 2024 ☐

Wixom Dept. of Public Works  
2041 Charms Rd., Wixom  
9:00am - 2:00pm

#### April 20, 2024 ☐

RRRASOC MRF - Truck Entrance  
20875 Mapleridge Ave., Southfield  
9:00am - 2:00pm

**May 4, 2024**

Oakland Community College  
Orchard Ridge Campus Lot 8  
27055 Orchard Lake Rd., Farmington Hills

**May 18, 2024** □

Milford Civic Center  
1100 Atlantic St., Milford  
Enter from West, off Mont Eagle St.

**July 13, 2024** □

Wixom Dept. of Public Works  
2041 Charms Rd., Wixom  
9:00am - 2:00pm

**October 5, 2024**

Novi Dept. of Public Works  
26300 Lee BeGole Dr., Novi  
9:00am - 2:00pm

**October 26, 2024** □

RRRASOC MRF - Truck Entrance  
20875 Mapleridge Ave., Southfield  
9:00am - 2:00pm

**\*The T-shirt icon indicates an HHW Collection Event during which clothing, shoes, accessories, and small household items will be accepted by Simple Recycling.**

For more information about HHW events and how to prepare your items, please visit our [HHW page](#).

---

## HHW Drop-Off at ERG Environmental Services

If you have HHW that you'd like to properly dispose of between collection events, you're in luck! Drop off your HHW without a fee at ERG Environmental Services during the following hours:

**Monday - Friday:**  
9:00 AM - 4:00 PM

---

HHW pickup from your home is also available for a fee of \$135 per stop plus \$0.75 per pound of material collected. This fee is paid directly by the resident to ERG Environmental Services.

*To confirm drop-off times and/or to schedule a pickup, please contact:*

ERG Environmental Services  
13040 Merriman Road, Livonia  
(734) 437-9650



For more info, visit the [ERG HHW Drop-Off page](#) or our [HHW page](#).

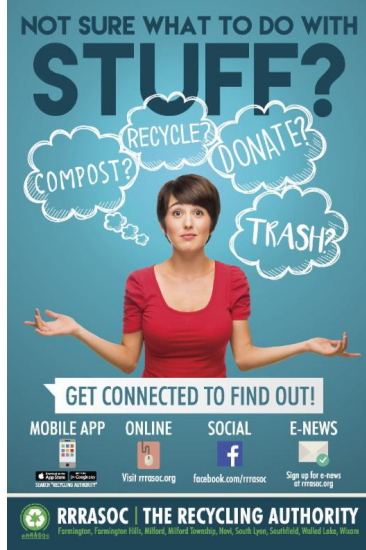
---

## RRRASOC Recycling Directory

Not sure what to do with stuff?

Visit [rrrasoc.org](http://rrrasoc.org) and use the Recycling Directory search bar to type in keywords and get recycling, composting, reuse or disposal instructions.

The searchable, intuitive format of the



Recycling Directory provides RRRASOC specific information.

**Also Available:**

**Mobile App**

- From your App Store or Google Play, search for "Recycling Authority"

Want more tips, tricks, and updates about recycling? We have a Facebook page where we can reach each other to make recycling easier. You can also reach us via [RRRASOC.org](http://RRRASOC.org) and email at [education@rrrasoc.org](mailto:education@rrrasoc.org)!



RRRASOC - Recycling Authority | 248-208-2270 | [rrrasoc.org](http://rrrasoc.org)



RRRASOC - Recycling Authority | 20000 West Eight Mile Rd, Southfield, MI 48075

[Unsubscribe mcsapo@rrrasoc.org](mailto:unsubscribe_mcsapo@rrrasoc.org)

[Update Profile](#) | [Constant Contact Data Notice](#)

Sent by [mcsapo@rrrasoc.org](mailto:mcsapo@rrrasoc.org) powered by



Try email marketing for free today!