

RRRASOC COMMUNITIES

SOLID WASTE & RECYCLING

2022 METRICS

HOW WELL ARE WE RECYCLING?



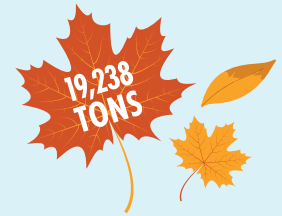
Paper, Plastic, Glass,
& Metal Recycled



Clothing Reused



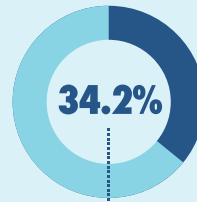
Hazardous Materials
Properly Managed



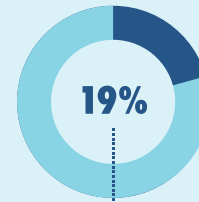
Yard Waste Composted



101,030 TONS
TOTAL SOLID WASTE



TOTAL RECYCLING RATE IN
RRRASOC COMMUNITIES, 2022
(378 lbs. per household)



TOTAL RECYCLING RATE
IN MICHIGAN
(321 lbs. per household)

RRRASOC
COMMUNITIES
HAD A **HIGHER**
RESIDENTIAL
RECYCLING RATE
THAN THE
MICHIGAN
AVERAGE.

HOW MUCH DID IT COST?

(per capita)

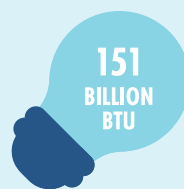
\$102.33
SOUTHEAST MICHIGAN
(regional average)

RRRASOC ONLY
SPENT ABOUT
HALF AS MUCH
AS THE REGIONAL
AVERAGE!

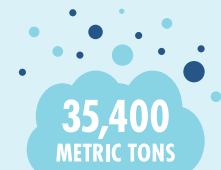
\$51.60
RRRASOC



ENVIRONMENTAL IMPACTS



Energy Saved



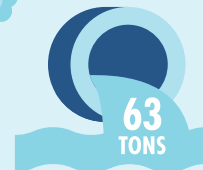
Reduced CO₂e



Trees Saved



Reduced Air/Waterborne Emissions



RRRASOC

THE RECYCLING
AUTHORITY