



Recycling Authority June 2022

20000 West Eight Mile Road | Southfield
248-208-2270 | www.rrrasoc.org



Paper Shredder Now Available

DOCUMENT SHREDDER

Personal Documents Only
(No Businesses)

Hours of Operation
Monday - Friday
7:00 am to 7:00 pm

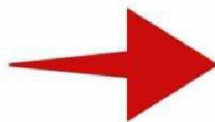


If you have personal documents in need of shredding but don't want to wait for the next special event to do so, we have some great news! Our self-serve paper shredder is now available for use by all RRRASOC residents on **weekdays from 7am to 7pm** - no appointment necessary! The shredder is located at the RRRASOC Materials Recovery Facility at 20000 Eight Mile Road in Southfield, near the drop-off containers. To access the shredder, look for the door with the **special shredder sign**.

To learn more about proper paper shredding and disposal, search *Shredded Paper* on the [Recycling Directory](http://www.rrrasoc.org) at rrrasoc.org.

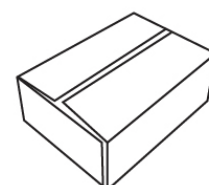
Loose personal documents only (no businesses). Limit 3 boxes or 100lbs per visit.

Why Flatten Your Boxes?



Please flatten all cardboard boxes, at home and at the drop-off sites. When you empty and flatten boxes, you help maximize space so your curbside cart and the drop-off site containers can fill with recyclables, not air. This is especially important at the drop-off sites. During a recent study of the Novi Recycling Drop-Off site, users frequently mentioned the containers were "always full". Throughout the study, we inspected the recycling containers and found the main cause of this to be unflattened boxes. It only takes a few open boxes in the recycling container to "fill" it up. By flattening boxes, you also help make more efficient use of the

STEP 1



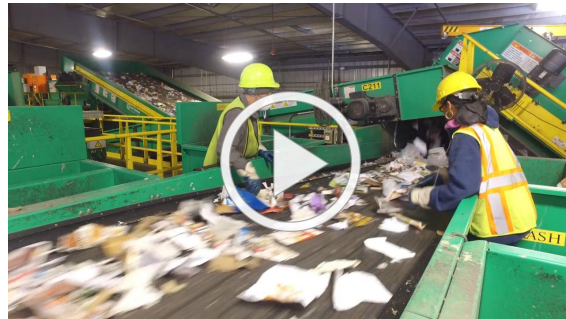
trucks transporting your recyclables to the Materials Recovery Facility. *Thanks for flattening your boxes before you recycle them!*

Your Recyclables' Journey: Where Do They Go?

Ever wonder what happens to your recyclables when you set them out at the curb or take them to a RRRASOC recycling drop-off site? If you worry that they aren't getting recycled, worry no more!



Our **virtual MRF tour** gives you an inside look at each step of the recycling process and how your recyclables are incorporated back into the materials market. From your home, to the Materials Recovery Facility (MRF), to end markets all over the world, follow along as we take you step-by-step through your recyclables' journey! Watch the video below or click [here](#) to view the virtual MRF tour.



Upcoming HHW Collection Event Dates

July 16th, 2022

Wixom Dept. of Public Works
2041 Charms Rd., Wixom
9:00am - 2:00pm

October 1st, 2022

Novi Dept. of Public Works
26300 Lee BeGole Dr., Novi
9:00am - 2:00pm

October 29th, 2022

RRRASOC MRF - Truck Entrance
20875 Mapleridge Ave., Southfield
9:00am - 2:00pm

***The T-shirt icon indicates an HHW collection event in which clothing, shoes, accessories, and small household items will be accepted by *Simple Recycling*.**

For more information about HHW collection events and how to prepare your items, please visit our [HHW page](#).

HHW Drop-Off at ERG Environmental Services

If you have HHW that you'd like to properly dispose of between collection events, you're in luck! Drop off your HHW without a fee at ERG Environmental Services during the following hours:

Mon, Wed, Fri:
9:00 AM - 5:00 PM

Tue, Thur:
9:00 AM - 7:00 PM

HHW pickup from your home is also available for a fee of \$135 per stop plus \$0.75 per pound of material collected. This fee is paid directly by the resident to ERG Environmental Services.

To confirm drop-off times and/or to schedule a pickup, please contact:

ERG Environmental Services
13040 Merriman Road, Livonia
(734) 437-9650



For more info, visit the [ERG HHW Drop-Off page](#) or our [HHW page](#).

Follow Us on Facebook

Want more tips, tricks, and updates about recycling? We have a Facebook page where we can reach you daily to make recycling easier. Not only that, but you can reach us too - send us a message or comment on one of our posts today!

[Head over to Facebook](#)



RRRASOC Recycling Directory

Not sure what to do with stuff?

Visit rrrasoc.org and use the Recycling Directory search bar to type in keywords and get recycling, composting, reuse or disposal instructions.

The searchable, intuitive format of the Recycling Directory provides RRRASOC specific information.

Also Available:

- Mobile App
 - From your App Store or Google Play, search for "Recycling Authority"
- Alexa Enabled Device
 - Simply say, "Alexa, enable Recycling Directory"

NOT SURE WHAT TO DO WITH

STUFF?



GET CONNECTED TO FIND OUT!

MOBILE APP



Available on the App Store
GET IT ON
Google Play

ONLINE



Visit rrrasoc.org

SOCIAL



facebook.com/rrrasoc

E-NEWS



Sign up for e-news
at rrrasoc.org



RRRASOC | THE RECYCLING AUTHORITY

Farmington, Farmington Hills, Milford, Milford Township, Novi, South Lyon, Southfield, Walled Lake, Westland

RRRASOC - Recycling Authority | 248-208-2270 | rrrasoc.org