



## Recycling Authority December 2024

20000 West Eight Mile Road | Southfield  
248-208-2270 | [www.rrrasoc.org](http://www.rrrasoc.org)



Have a Sustainable New Year!



**Happy Holidays from the RRRASOC team!** We hope you were able to make use of our recycling and waste reduction tips throughout 2024, as well as attend an HHW Collection Event or two. We're grateful for all the residents in Southwest Oakland County (and beyond) who follow the guidelines and do their part in keeping our environment clean! As your recycling authority, RRRASOC looks forward to providing recycling services, updates, and tips to our member communities throughout the new year.

Let's end the year on a great note! Learn how you can avoid over-consumption, reduce your holiday waste, and ensure your recyclables are being handled properly with the tips below.

### Gifts & Wrapping

- When purchasing gifts, consider how much packaging is being used to contain the product. Are you able to buy a version without the excessive packaging?
- Sometimes, experiences are the best kinds of gifts! Would your gift recipient enjoy tickets to a sports game, or perhaps a cooking class?
- Remember to break down your cardboard boxes before recycling them. They can also be reused as moving boxes, gift boxes, and more!
- When your shipped packages come with brown packing paper instead of bubble wrap, place this eco-friendly alternative with your recyclables.
- Paper and boxes with tape on them are **OK** to be placed in your recycling bin!
- Wrapping paper and gift bags are recyclable as long as there are no ribbons, bows, foil, glitter, or other non-paper accessories. Alternatively, reuse your gift bags again and again!



- Get creative with your gift wrapping! Use reusable fabric or paper from around the house instead of buying new wrapping paper.
- If you're including a card, consider sending an e-card to save on paper. Otherwise, paper cards can be recycled as long as there is no foil, glitter, etc.



## Decorations

- Holiday decorations, ornaments, and tinsel can be reused for many years. If you have decorations you no longer want, donate them! Broken ornaments can be carefully placed in the trash.
- Have a string of holiday lights that no longer work? Try replacing a bulb! If that doesn't get them shining again, save them for one of next year's [HHW Collection Events](#).
- If you're not one to keep holiday decorations all year, try making paper decorations such as snowflakes, snowmen and hanging ornaments. These can be recycled after the holidays!
- *For information on holiday tree disposal (artificial and live), please read on!*



## Parties

- Most single-use dinnerware items are not recyclable due to size, coatings, etc. Switching to reusable plates, cups, and cutlery keeps these items out of the landfill.
- As a callback to last month's Thanksgiving tip, it's important to gauge how many people will be eating at your party. We recommend using the [Guestimator](#), an online food calculator that can help you save money and reduce your overall food waste.
- Planning on throwing confetti on New Year's Eve? For a more eco-friendly



option, throw rice on the backyard instead. Or, celebrate with some high-fives!

- Set an example and make recycling options readily available for your guests by setting out a small recycling container next to your trash can in the kitchen or in areas with high foot traffic. Remember to label it for recycling so there's no confusion.



## New-Year Cleanout

- Updating your wardrobe for the new year? Don't throw your old clothes away; **donate them locally** or have them picked up for free with **Simple Recycling!**
- If you're replacing old batteries with new ones, do not place them in your recycling where they can become a fire hazard for you, the collection workers, and the sorting crew at the Materials Recycling Facility (MRF). Check the **RRRASOC Recycling Directory** to learn how to properly dispose of your batteries.
- Did you receive something you don't particularly want this holiday season? Don't toss it! (You have our permission to re-gift it; it's a form of recycling!)
- When everything is said and done, it's time to dispose of those receipts. They can be placed in the trash as their glossy, thermal coating does not allow them to be recycled.



## Curbside Food Waste Collection Survey

A pilot food scrap recycling initiative was introduced for City of Wixom residents in April 2024. Through this program, City of Wixom residents were able to dispose of

their food waste with their yard waste at no extra cost.

RRRASOC has been conducting a survey to get feedback from City of Wixom residents and residents of other RRRASOC communities about food scrap recycling. If you haven't already responded to the food scrap recycling survey and live in a RRRASOC community (*Farmington, Farmington Hills, Village of Milford, Milford Township, Novi, Southfield, South Lyon, Walled Lake, and Wixom*), please take **5 minutes** to complete the survey below. By taking this survey, you will help us gather data for potential expansion of this program. Your response is greatly appreciated!



[Take Survey](#)

## Reminder: Curbside Holiday Service Delays



Christmas Day and New Year's Day both fall on a Wednesday, which means residents whose curbside collection normally occurs on Wednesday, Thursday, and Friday will have **curbside trash and recycling services delayed by one day** during those weeks.

*We look forward to servicing you in the new year!*

## "Can I Recycle Artificial Trees?"

The answer is: **Reuse and Donate!**

Reuse your tree for as long as you can! Fluffing the branches can often make an older artificial tree look brand new. If it's a pre-lit tree and a section isn't lighting up, you may just need to replace a bulb.

Artificial trees cannot be disposed of in your curbside recycling cart nor at the RRRASOC recycling drop-off sites, as they are made from a mix of materials that cannot be efficiently separated at the recycling facility (such as plastic needles, metal branches, and electronic lights). If your old tree is still in usable condition, consider giving it to a friend in need or donating it to a local secondhand store! Find a list of secondhand stores near you on our [Reuse](#) page.

Artificial trees that are no longer in usable condition can be placed at the curb for regular trash pickup. Check locally for artificial tree (bulk item) disposal guidelines.



## What About Real Trees?

Real holiday trees can generally be set out at curbside in January to be collected as yard waste or as a bulk trash item. Check locally for acceptability. They can also be composted **at home** or at a certified composting facility such as [Spurt Industries](#) in



## **NEW - 2025 HHW Collection Event Dates**

During the following HHW Collection Events, all residents of RRRASOC member communities are welcome to bring household hazardous waste for an opportunity to safely discard their hazardous items and e-waste. *Simple Recycling* and paper shredding services will also be available\*.

### **April 5, 2025** ☐

Wixom Dept. of Public Works  
2041 Charms Rd., Wixom  
9:00am - 2:00pm

### **April 26, 2025** ☐

RRRASOC MRF - Truck Entrance  
20875 Mapleridge Ave., Southfield  
9:00am - 2:00pm

### **May 10, 2025**

Oakland Community College  
27055 Orchard Lake Rd., Farmington Hills  
9:00am - 2:00pm

### **May 17, 2025** ☐

Milford Civic Center  
1100 Atlantic St., Milford  
Enter from west off of Mont Eagle St.  
9:00am - 2:00pm

### **July 12, 2025** ☐

Wixom Dept. of Public Works  
2041 Charms Rd., Wixom  
9:00am - 2:00pm

### **October 4, 2025**

Novi Dept. of Public Works  
26300 Lee BeGole Dr., Novi  
9:00am - 2:00pm

### **October 25, 2025** ☐

RRRASOC MRF - Truck Entrance  
20875 Mapleridge Ave., Southfield  
9:00am - 2:00pm

\*The T-shirt icon indicates an HHW Collection Event during which clothing, shoes, accessories, and small household items will be accepted by *Simple Recycling*.

For more information about HHW events and how to prepare your items, please visit our [HHW page](#).

## **HHW Drop-Off at ERG Environmental Services**

If you have HHW that you'd like to properly dispose of between collection events, you're in luck! Drop off your HHW without a fee at ERG Environmental Services during the following hours:

**Monday - Friday:**

HHW pickup from your home is also available for a fee of \$135 per stop plus \$0.75 per pound of material collected. This fee is paid directly by the resident to ERG Environmental Services.

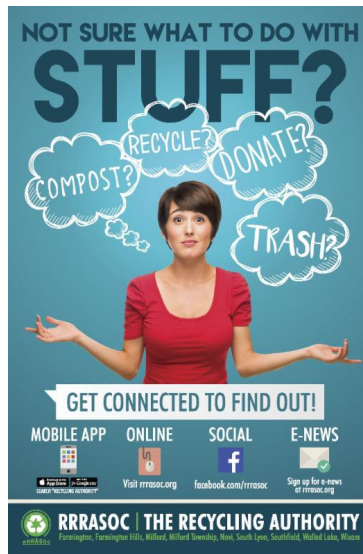
*To confirm drop-off times and/or to schedule a pickup, please contact:*

ERG Environmental Services  
13040 Merriman Road, Livonia  
(734) 437-9650



For more info, visit the [ERG HHW Drop-Off page](#) or our [HHW page](#).

## RRRASOC Recycling Directory



Not sure what to do with stuff?

Visit [rrrasoc.org](http://rrrasoc.org) and use the Recycling Directory search bar to type in keywords and get recycling, composting, reuse or disposal instructions.

The searchable, intuitive format of the Recycling Directory provides RRRASOC specific information.

### Also Available:

#### Mobile App

- From your App Store or Google Play, search for "Recycling Authority"

Want more tips, tricks, and updates about recycling? We have a Facebook page where we can reach each other to make recycling easier. You can also reach us via [RRRASOC.org](http://RRRASOC.org) and email at [education@rrrasoc.org](mailto:education@rrrasoc.org)!



RRRASOC - Recycling Authority | 248-208-2270 | [rrrasoc.org](http://rrrasoc.org)



[Unsubscribe](#) | [Update Profile](#) | [Constant Contact Data Notice](#)



Try email marketing for free today!