



Recycling Authority February 2025

20000 West Eight Mile Road | Southfield
248-208-2270 | www.rrrasoc.org



We LOVE Recycling!



Do you LOVE recycling too? This Valentine's Day, share your love for keeping our communities clean by educating others on the importance of proper recycling and waste diversion. With department stores all over the country selling greeting cards, boxes of chocolate, gift boxes, and even live flowers, this is an important holiday to practice sustainable shopping decisions. If you're thinking this is just like December's holidays all over again, you're not entirely wrong... But just like every other holiday, you have the power to **recycle right with RRRASOC!**

Ask yourself the following questions if you plan on giving a gift to that special someone this Valentine's Day. (Make note: These tips are great to remember for any occasion!)

"Is it something that will last?"

Live flowers may be beautiful, but they'll only last for a few days before they start to wilt. Consider gifting something that will last them most of the year, such as a potted plant or garden starter kit!

Instead of filling a gift basket with candy sugar bombs or plastic trinkets, add home-baked goodies and gifts straight from the heart. Think photo collages, handwritten recipes, or even some art made just for them!



"Will they remember it?"

The best way to ensure that your valentine will remember their gift is by buying them an experience you can both share, such as cooking classes, an art lesson, concert tickets, or something else that you can both make memories with together.

Sometimes, just going out for dinner is the kind gesture they need to be reminded of how much they mean to you!



"Is it recyclable or reusable?"

Speaking of going out to dinner, don't forget to bring a

reusable takeout container to avoid unnecessary plastic or polystyrene foam waste!

If you're giving them a card this Valentine's Day, make sure it's recyclable by avoiding ones with glitter, foil, plastic add-ons, or other non-paper accessories. The same goes for gift bags!



"Is it worth the money?"

Gift giving often includes gift wrapping, however the wrapping paper, gift boxes, and tissue paper you purchase are packaging items that instantly become trash once the gift is opened. What a waste! The thrill of unwrapping can still be achieved by using reusable fabric bags, a colorful scarf, or reused recyclable paper, such as road maps or comic paper.



Try skipping the wrapping altogether and instead give your Valentine a treasure map with clues to find their hidden gift in a special location in the house.

Takeout Containers: *Are They Recyclable?*

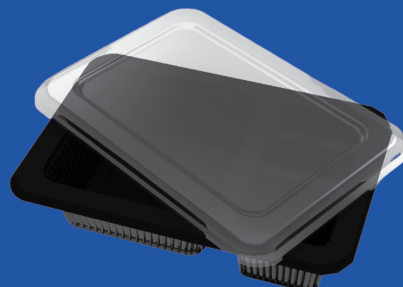
In today's on-the-go culture, takeout containers are a must - whether it's for bringing home leftovers or getting a snack while running errands, you're bound to get a clamshell box or disposable cup. You're then left with the question, *"Is this recyclable in my community?"*

Sometimes, the answer can be confusing... But both RRRASOC and the Food Packaging Institute (FPI) are here to make it simple! View our short guide below for clarifications on which takeout containers, to-go cups and other food packaging are locally recyclable, and watch the video to see what happens to them after they're recycled!



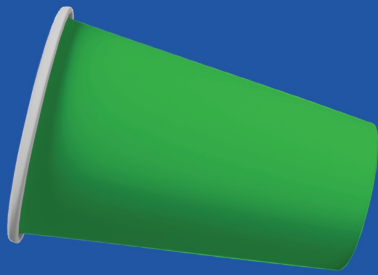
Clear Plastic Containers:

Check for a resin code (likely #1 or #5) on the bottom and toss them in with your recycling.



Black Takeout Containers:

Some facilities do not accept black plastic takeout containers, but they are accepted for recycling with us!



Paper Cups:

Paper cups (without lids or straws) started being accepted in your curbside recycling in 2021!



Plastic Cups:

Check for a resin code (likely #1 or #5) on the bottom and toss them in with your recycling.



Paper Takeout Boxes/Holders:

As long as they are not coated in grease, wax, or contain food, paper takeout items are recyclable.



Polystyrene Foam Containers:

RRRASOC does not accept foam takeout containers for recycling. Check for drop-off locations online!*



*Some companies accept polystyrene foam for recycling via local drop-off locations. To search for a location near you, click [here](#).

Dispose of your HHW at a Collection Event!

The first of this year's **Household Hazardous Waste (HHW) Collection Events** is just two months away! Do you know which items can be taken to an HHW Collection Event? Think household cleaners, batteries, electronics, clothing, medications, documents for

shredding, and more! With that in mind, here's a quick rundown of why you should bring these items to **Wixom's HHW Collection Event on April 5** (aside from simply clearing out space under your sink):



You're Keeping Toxic Chemicals Out of Streets, Landfills, and Bodies of Water

Dumping your household chemicals on the ground, washing them down the sink, or even sending them to the landfill is bad for the surrounding areas, including the groundwater (which eventually ends up in larger bodies of water). A lot of contamination issues can stem from improper HHW disposal - don't let it be from your doing!



You're Eliminating Exposure to Toxics for Sanitation Workers and Yourself

When someone tosses household cleaners, old batteries, and other hazardous chemicals into their trash can, they put themselves and sanitation workers at risk of exposure - and not just the collection crew! Those working at the transfer stations or landfills are put at risk as well. Keep everyone safe with proper HHW disposal!



You're Reducing the Risk of Household Chemical Poisoning for Children and Pets

Getting rid of leftover chemicals under your kitchen sink, in your garage, or in the basement reduces the risk of small children or pets accidentally tampering with or ingesting them. When saving your household chemicals and medications for later use, be sure to set them in a secure, high place to avoid this issue.

2025 HHW Collection Event Dates

During the following HHW Collection Events, all residents of RRRASOC member communities are welcome to bring household hazardous waste for an opportunity to safely discard their hazardous items and e-waste. *Simple Recycling* and paper shredding services will also be available*.

April 5, 2025 ☐

Wixom Dept. of Public Works
2041 Charms Rd., Wixom
9:00am - 2:00pm

April 26, 2025 ☐

RRRASOC MRF - Truck Entrance
20875 Mapleridge Ave., Southfield
9:00am - 2:00pm

May 10, 2025

Oakland Community College
27055 Orchard Lake Rd., Farmington Hills
9:00am - 2:00pm

May 17, 2025 ☐

Milford Civic Center
1100 Atlantic St., Milford
Enter from west off of Mont Eagle St.
9:00am - 2:00pm

July 12, 2025 ☐

Wixom Dept. of Public Works
2041 Charms Rd., Wixom
9:00am - 2:00pm

October 4, 2025

Novi Dept. of Public Works
26300 Lee BeGole Dr., Novi
9:00am - 2:00pm

October 25, 2025 ☐

RRRASOC MRF - Truck Entrance
20875 Mapleridge Ave., Southfield

*The T-shirt icon indicates an HHW Collection Event during which clothing, shoes, accessories, and small household items will be accepted

For more information about HHW events and how to prepare your items, please visit our [HHW page](#).

HHW Drop-Off at ERG Environmental Services

If you have HHW that you'd like to properly dispose of between collection events, you're in luck! Drop off your HHW without a fee at ERG Environmental Services during the following hours:

Monday - Friday:
9:00 AM - 4:00 PM

HHW pickup from your home is also available for a fee of \$135 per stop plus \$0.75 per pound of material collected. This fee is paid directly by the resident to ERG Environmental Services.

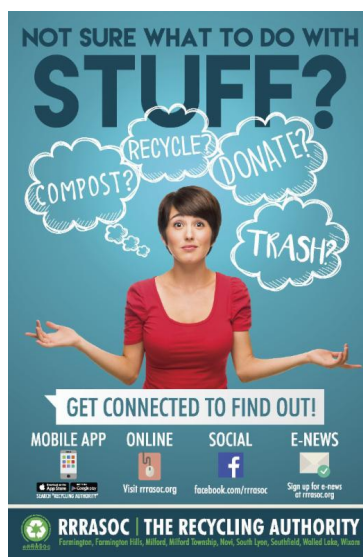
To confirm drop-off times and/or to schedule a pickup, please contact:

ERG Environmental Services
13040 Merriman Road, Livonia
(734) 437-9650



For more info, visit the [ERG HHW Drop-Off page](#) or our [HHW page](#).

RRRASOC Recycling Directory



Not sure what to do with stuff?

Visit rrrasoc.org and use the Recycling Directory search bar to type in keywords and get recycling, composting, reuse or disposal instructions.

The searchable, intuitive format of the Recycling Directory provides RRRASOC specific information.

Also Available:

Mobile App

- From your App Store or Google Play, search for "Recycling Authority"



Directory



Game



Calendar



Drop-Off Centers



Simple Recycling



Need help?

Type the name of an item and we'll tell you how to recycle or dispose of it.

[Search](#)

FEATURED SEARCHES



[Electronics and
electric
equipment](#)



[Furniture](#)



[Paint - latex \(full
or partially full\)](#)



[Sharps and
Needles](#)

[Privacy](#) | [Terms of Service](#) | [Cookie Policy](#)

Want more tips, tricks, and updates about recycling? We have a Facebook page where we can reach each other to make recycling easier. You can also reach us via RRRASOC.org and email at education@rrrasoc.org!



RRRASOC - Recycling Authority | 248-208-2270 | rrrasoc.org



RRRASOC | THE RECYCLING
AUTHORITY

RRRASOC - Recycling Authority | 20000 West Eight Mile Rd | Southfield, MI 48075 US

[Unsubscribe](#) | [Update Profile](#) | [Constant Contact Data Notice](#)



Try email marketing for free today!