



Recycling Authority June 2025

20000 West Eight Mile Road | Southfield
248-208-2270 | www.rrrasoc.org



Clothing Recycling in RRRASOC Communities

Do you have clothing, shoes, accessories, linens, towels, or other household essentials that you no longer need, but you're too busy to donate them at your local secondhand store? Try **Simple Recycling** to ensure your items don't end up in the landfill! With this residential at-home pickup service, your 100% recyclable* textiles can be donated at your convenience! All items donated through **Simple Recycling** go to a local nonprofit organization of your choosing.



RRRASOC community members (Farmington, Farmington Hills, Milford, Milford Township, Novi, Southfield, South Lyon, Walled Lake, and Wixom) have exclusive access to **Simple Recycling** services with absolutely no charge. **Yes, you read that right - this service is free!** The steps are simple and only take a few minutes to complete:



Schedule a pickup
online or by phone.



Place your gently
used items outside
your front door by
7:30am.



Simple Recycling
will pick them up!

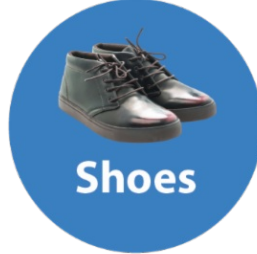
What's Accepted with *Simple Recycling*?



Clothing



Bedding



Shoes



Hats



Under-Garments



Accessories



Costumes



Books



Toys



Towels



Curtains



Coats

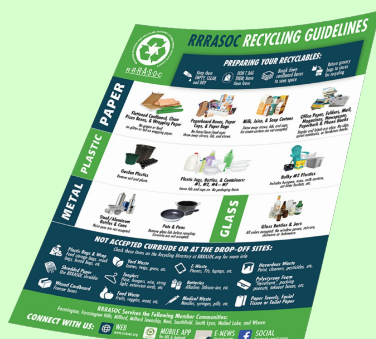
...and more!

**Clothing, textiles, and household essentials are not recyclable through curbside recycling nor at the recycling drop-off sites. However, their lifespan can always be extended by being "reused" by a new owner through secondhand donating. The more items that we can keep out of the landfill, the better!*

June 16-20: Waste & Recycling Workers Week



The collection of your trash, recycling, and yard waste is essential to the cleanliness and health of our communities. With that being said, curbside collection crews, landfill & MRF workers, and even those working behind the scenes all play an important part in this process. This week, show your appreciation for our Waste & Recycling workers with a simple gesture such as waving to say hello, leaving a thank-you note taped to your curbside cart, or even improving your recycling habits to make their job a little easier!



How to Improve Your Recycling Habits with RRRASOC

Visit our **Curbside Recycling** or **Drop-Off Guidelines** pages to see what is and is not accepted for recycling in your community.

The **RRRASOC Recycling Guidelines** flyer also serves as a visual guide and gives information on how to properly prepare your recyclables for disposal.

Waste & Recycling Workers Week Coloring Pages

Appreciating all that our public workers do starts at a young age. [Click here](#) to download a set of free coloring pages so the kids can show their appreciation too!



"Can I Recycle Food & Beverage Containers?"

The answer is: **Keep them loose, clean, and dry!**

Paper, plastic, glass, and metal food containers - such as peanut butter jars, tuna cans, and even clean pizza boxes - are recyclable at curbside and at the RRRASOC recycling drop-off sites. Remember to keep them **loose** (e.g. don't shove your water bottles inside your cereal boxes), **clean** (just a light rinse will do) and **dry**.

Another thing to be aware of when recycling food and beverage containers is the composition of the material. If it contains both paper and plastic, is it separable? When it comes to items such as potato chip tubes, they are often made with a mix of materials that cannot be mechanically separated, thus making them nonrecyclable. Check the [Recycling Directory](#) if you have questions about which food containers can be recycled!



Lastly, don't forget to return your bottles and cans to your local supermarket to get your deposit back - these items get recycled afterward! *It's a win-win!*

2025 HHW Collection Event Dates

During the following HHW Collection Events, all residents of RRRASOC member communities are welcome to bring household hazardous waste for an opportunity to safely discard their hazardous items and e-waste. *Simple Recycling* and paper shredding services will also be available*.

July 12, 2025 ☐

Wixom Dept. of Public Works
2041 Charms Rd., Wixom
9:00am - 2:00pm

October 4, 2025

Novi Dept. of Public Works
26300 Lee BeGole Dr., Novi
9:00am - 2:00pm

October 25, 2025 ☐

RRRASOC MRF - Truck Entrance
20875 Mapleridge Ave., Southfield
9:00am - 2:00pm

*The T-shirt icon indicates an HHW Collection Event during which clothing, shoes, accessories, and small household items will be accepted by [Simple Recycling](#).

For more information about HHW events and how to prepare your items, please visit our [HHW page](#).

HHW Drop-Off at ERG Environmental Services

If you have HHW that you'd like to properly dispose of between collection events, you're in luck! Drop off your HHW without a fee at ERG Environmental Services during the following hours:

Monday - Friday:
9:00 AM - 4:00 PM

HHW pickup from your home is also available for a fee of \$135 per stop plus \$0.75 per pound of material collected. This fee is paid directly by the resident to ERG Environmental Services.

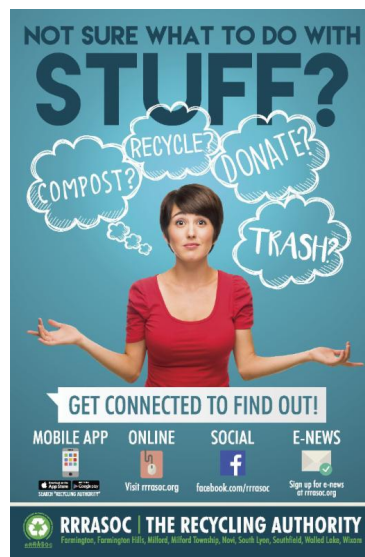
To confirm drop-off times and/or to schedule a pickup, please contact:

ERG Environmental Services
13040 Merriman Road, Livonia
(734) 437-9650



For more info, visit the [ERG HHW Drop-Off page](#) or our [HHW page](#).

RRRASOC Recycling Directory



Not sure what to do with stuff?

Visit rrrasoc.org and use the Recycling Directory search bar to type in keywords and get recycling, composting, reuse or disposal instructions.

The searchable, intuitive format of the Recycling Directory provides RRRASOC specific information.

Also Available:

Mobile App

- From your App Store or Google Play, search for "Recycling Authority"



Directory



Game



Calendar



Drop-Off Centers



Simple Recycling



Need help?

Type the name of an item and we'll tell you how to recycle or dispose of it.

[Search](#)

FEATURED SEARCHES



[Electronics and
electric
equipment](#)



[Furniture](#)



[Paint - latex \(full
or partially full\)](#)



[Sharps and
Needles](#)

[Privacy](#) | [Terms of Service](#) | [Cookie Policy](#)

Want more tips, tricks, and updates about recycling? We have a Facebook page where we can reach each other to make recycling easier. You can also reach us via RRRASOC.org and email at education@rrrasoc.org!



RRRASOC - Recycling Authority | 248-208-2270 | rrrasoc.org



RRRASOC | THE RECYCLING
AUTHORITY

RRRASOC - Recycling Authority | 20000 West Eight Mile Rd | Southfield, MI 48075 US

[Unsubscribe](#) | [Update Profile](#) | [Constant Contact Data Notice](#)



Try email marketing for free today!