



R·R·R·A·S·O·C

2025 Annual Report

Member Communities

**Farmington
Farmington Hills
Milford
Milford Township
Novi
South Lyon
Southfield
Walled Lake
Wixom**

Board of Directors

Chairman

Gary Mekjian, City Manager, Farmington Hills

Vice Chairman

Steve Brown, City Manager, Wixom

Treasurer

Chelsea Pesta, Assistant City Manager, Walled Lake

Secretary

Fred Zorn, City Administrator, Southfield

David Murphy, City Manager, Farmington
Christian Wuerth, Village Manager, Milford
Matthew Best, Manager, Milford Township
Victor Cardenas, City Manager, Novi
Doug Baaki, Interim City Manager, South Lyon
L. Dennis Whitt, City Manager, Walled Lake

Designated Board Alternates

Joshua Leach, Director, Farmington Department of Public Services
Karen Mondora, Assistant City Manager, Farmington Hills
Jacob Rushlow, Director, Farmington Hills Department of Public Services
Derrick Schueller, Superintendent, Farmington Hills Department of Public Works
Mike Karll, Director, Village of Milford Department of Public Services
Jeff Herczeg, Director, Novi Department of Public Works
John Michrina, Deputy City Administrator, Southfield
Abdul Siddiqui, Director, Southfield Department of Public Works
Tim Sikma, Director, Wixom Department of Public Works

RRRASOC Staff

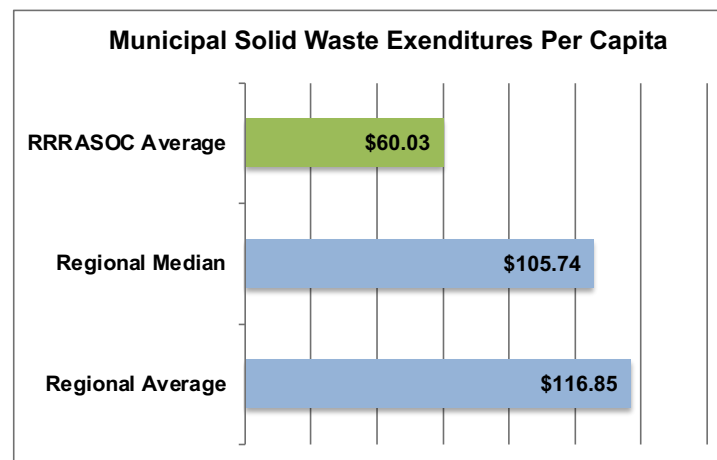
Michael Csapo, General Manager
Laura Shaw, Administrative Secretary
IRIS Waste Diversion Specialists, Education and Outreach Coordinators

Introduction

During 2025, RRRASOC and its Member Communities maintained their tradition of providing cost-effective, environmentally responsible materials management programs through stakeholder engagement, intergovernmental cooperation, and public-private partnerships. RRRASOC worked with State officials, industry stakeholders, and our local communities to manage and improve upon programs and facilities.

Notable activities and accomplishments last year included:

- RRRASOC continued participation in multi-stakeholder efforts in Southfield to eliminate food waste.
- A successful food waste drop off program was initiated in Farmington.
- RRRASOC, in partnership with SOCRRA and Oakland County, completed Phase 2 of the development of a Storm and Disaster Debris Management Plan that will cover their 21 communities, both collectively and individually.
- RRRASOC staff continued working as a member of the State-mandated Materials Management Planning Committees in Oakland County and Genesee County, with the General Manager serving as Vice Chairman and Chairman, respectively.
- RRRASOC's General Manager was appointed to the Executive Committee of the Michigan Sustainable Business Forum.
- RRRASOC worked with State officials and other stakeholders on proposed legislation concerning battery recycling and safety, bottle deposit policy, and extended producer responsibility for packaging.
- RRRASOC assisted the City of South Lyon in soliciting proposals for curbside service.
- The annual audit by Plante Moran of the *RRRASOC Financial Report for FY 2024 – 2025* showed that RRRASOC conducted its financial affairs in accordance with generally accepted accounting principles and that the Authority maintained a healthy financial position.
- The completion of the *FY 2025 – 2026 Solid Waste Expenditure Benchmark Study* demonstrated the continued cost-effectiveness of the programs in the RRRASOC communities.

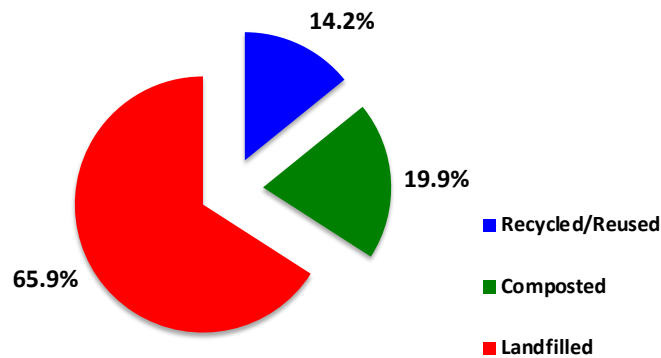


Materials Management Overview

Last year, through the RRRASOC community programs, 13,812 tons of paper, plastic, glass, and metal were recycled; 19,831 tons of organic material were composted; 14 tons of clothing were collected for reuse; 273 tons of hazardous material were collected for recycling or disposal; and 65,599 tons were landfilled.

In total, 33,929 tons of recyclable and reusable material, yard waste, food waste, and household hazardous waste items were collected and diverted from local landfills through the communities' curbside collection, drop-off, and event-based programs. The combined recycling rate of the RRRASOC communities was 34.1%, which is higher than both the U.S. and Michigan rates.

Solid Waste Disposition: 2025



Lifecycle analysis shows that recapturing those resources for value-added economic activity also yielded significant environmental benefits, including the following:

- Conserved more than 140 billion Btu, which is the equivalent of the annual energy consumption of 1,385 households;
- Reduced CO₂e emissions by 33,129 metric tons;
- Preserved 104,727 trees;
- Reduced airborne pollution emissions by 15,687 tons;
- Reduced waterborne pollution emissions by 59 tons.

RRRASOC COMMUNITIES

SOLID WASTE & RECYCLING

2025 METRICS

HOW WELL ARE WE RECYCLING?



Paper, Plastic, Glass,
& Metal Recycled



Clothing Reused



Hazardous Materials
Properly Managed

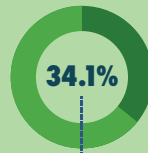


Organics Composted

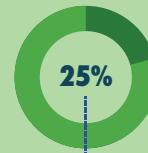
33,929
TOTAL TONS UTILIZED

65,599
TOTAL TONS LANDFILLED

99,528
TOTAL SOLID WASTE



TOTAL RECYCLING RATE IN
RRRASOC COMMUNITIES, 2025



TOTAL RECYCLING RATE
IN MICHIGAN

RRRASOC
COMMUNITIES
HAD A HIGHER
RESIDENTIAL
RECYCLING RATE
THAN THE
MICHIGAN
AVERAGE.

HOW MUCH DID IT COST?

(per capita)

\$116.85
SOUTHEAST MICHIGAN
(regional average)

RRRASOC
COMMUNITIES ONLY
SPENT ABOUT HALF
AS MUCH AS THE
REGIONAL AVERAGE!

\$60.03
RRRASOC COMMUNITIES



ENVIRONMENTAL IMPACTS



Energy Saved



Reduced CO₂e



Trees Saved



Reduced Air/Waterborne Emissions



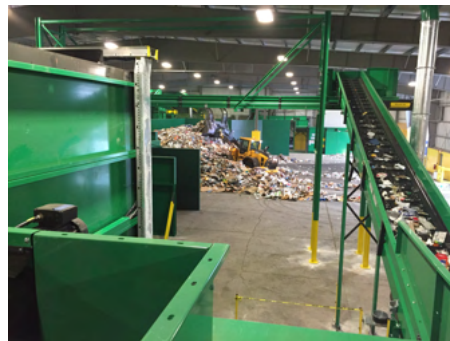
RRRASOC

THE RECYCLING
AUTHORITY

Material Recovery Facility Operations

RRRASOC extended its operating agreement with its contracted MRF operating partner, Republic Services, through December 31, 2026. The MRF operated two daily shifts throughout the year and continued to serve as an important part of community and commercial recycling programs throughout southeast Michigan.

Overall, the facility processed more than 55,695 tons of material during the year. The nearly 75,200 RRRASOC area homes and the two RRRASOC drop-off centers contributed 24% of the total throughput. The paper, glass, plastic, and metal that was processed at the MRF was shipped throughout the U.S., providing critical feedstock for manufacturers and the circular economy supply chain.



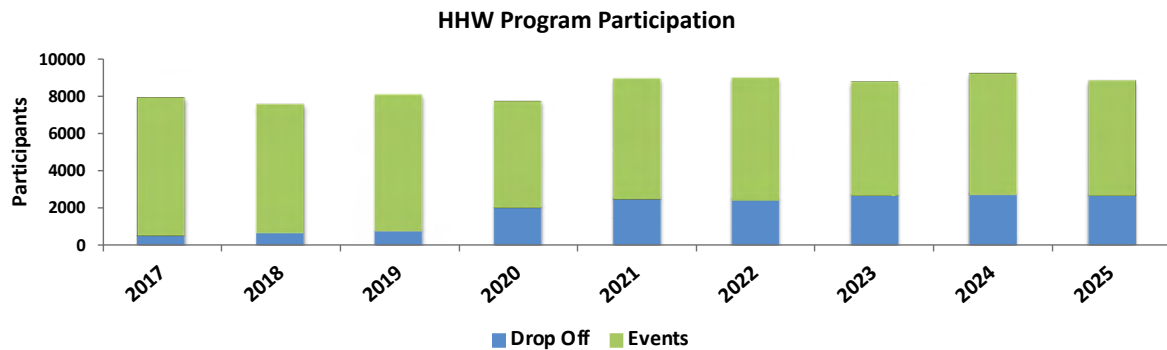
Household Hazardous Waste Program

RRRASOC's Household Hazardous Waste (HHW) collection program had another high-performance year in 2025. Nearly 8,900 residents participated in the program, which was 15% higher than the ten-year average.

546,00 pounds of material were collected in 2025, which was 5% more than last year and nearly 28% more than the historical program average.

RRRASOC worked with the Michigan Department of Agriculture to maintain RRRASOC's *Clean Sweep* grant, which facilitates the collection of pesticides throughout the area.

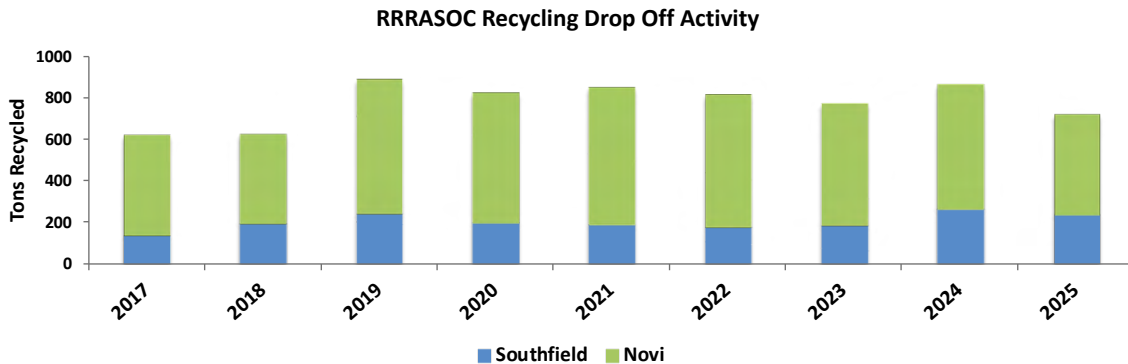
ERG Environmental Services, a local hazardous waste company, handled the material. Disposal and recycling costs through ERG continued to be among the lowest in southeast Michigan. All material was handled in accordance with state and federal laws.



Recycling Drop Off Centers

RRRASOC's recycling drop-off centers continued to be a popular recycling option for residents and businesses throughout the region. Last year, nearly 720 tons were brought to the sites.

The drop-off center in Novi accounted for nearly 485 tons of recycling, while the Southfield location contributed another 235 tons.



Outreach and Education

RRRASOC maintained a collaborative, multi-media approach to community outreach and education, leveraging partnerships with stakeholder organizations. The following efforts in 2025 complemented the communication programs of our individual communities:

- 73,250 direct mail educational postcards;
- 19,852 first time users of the online Recycling Directory;
- 36,842 material searches by residents using our online Recycling Directory;
- Nearly 4,300 User Sessions with Recycling Directory mobile application;
- Subscribers to the monthly electronic newsletter increased by more than 6%;
- 536 new resident packets were distributed;
- 30 presentations at schools and community events throughout the area;
- Improvements to print and digital content;
- Quarterly reviews and recommendations for each community's website;
- Video production with Southfield Cable 15 for cable and streaming broadcast.



R·R·R·A·S·O·C

20000 W. 8 Mile Road
Southfield, MI 48075
248.208.2270
248.208.2273 fax
www.RRRASOC.org